

Connectivity



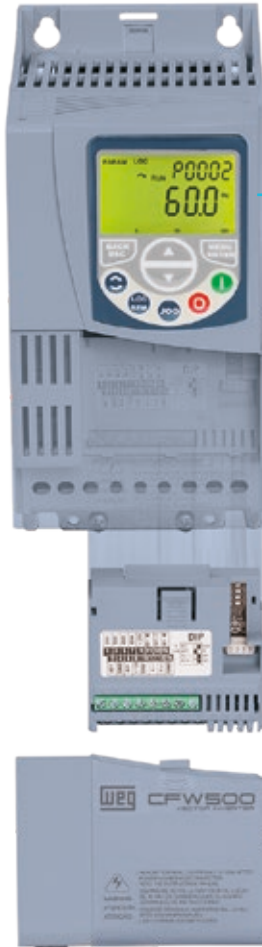
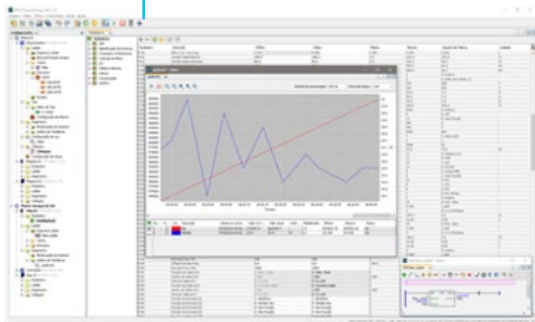
Remote operating interface (IHM-01 accessory)

Easy operation and view



Free at www.weg.net

Software WPS



The CFW500 can be connected to the main fast industrial Fieldbus communication networks, with protocols used worldwide such as CANopen, Profibus-DP, DeviceNet, PROFINET IO, EtherNet/IP and Modbus-TCP, according to the plug-in module selected.

In addition, all plug-in modules come with serial interface RS485 Modbus-RTU built-in.

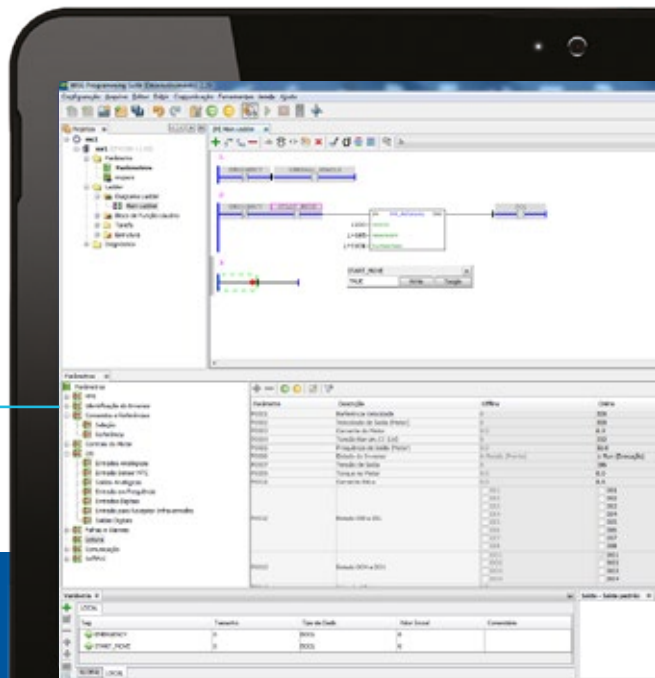
I/O expansion:
IOS (standard, included in the version with plug-in), IOD, IOAD, IOR

Functionality expansion:
Incremental encoder
USB

Fieldbus communication protocols:
CANopen
DeviceNet
RS232
RS485
Profibus-DP
EtherNet/IP
Modbus-TCP
PROFINET IO
BACnet
SybiNet

Selectable plug-in modules

USB Connection (CFW500-CUSB accessory)



Accessories

Plug-in module

On the CFW500, it is possible leave to choose later the model of the internal plug-in module by entering H00 in item 11 of the smart code. In this case, it is necessary to select the plug-in module as an accessory, according to the table bellow. In case H00 is not selected in item 11 of the smart code, the CFW500 will be supplied with the CFW500-IOS plug-in. You must always use one plug-in module per CFW500. Due to the different connections, when equipped with the plug-in module with the STO/SS1 safety functions, the inverter will still be able to connect another plug-in module at the user's choice.

Reference	Description		Illustrative figures
	Input and output (I/O) expansion		
CFW500-IOS ¹⁾	Standard plug-in module (included in the version with plug-in module)		   
CFW500-IOD	Digital input and output (I/O) expansion plug-in module		
CFW500-IOAD	Digital and analog input and output (I/O) expansion plug-in module		
CFW500-IOR-B	Relay output expansion plug-in module		
Functionality expansion			
CFW500-ENC	Plug-in module with encoder input		
CFW500-CUSB	Plug-in module with USB port		
CFW500-SFY2 ²⁾	Plug-in module with security function STO e SS1		
Communication on Fieldbus network			
CFW500-CCAN	CAN communication plug-in module (CANopen/DeviceNet)		
CFW500-CRS232	RS232 communication plug-in module		
CFW500-CRS485-B	RS485 communication plug-in module		
CFW500-CPDP	Profibus-DP communication plug-in module		
CFW500-CETH-IP	EtherNet/IP communication plug-in module		
CFW500-CEMB-TCP	Modbus-TCP communication plug-in module		
CFW500-CEPN-IO	PROFINET IO communication plug-in module		
CFW500-CETH2	EtherNet Dual Port communication plug-in module		
Memory			
CFW500-MMF	Flash memory module		
Interfaces			
CFW500-HMIR	Remote operating interface (HMI)		 
HMI-01	Alphanumeric HMI		
CFW500-RHMIF	Frame for remote HMI		
CFW500-CCHMIR1M	1-meter cable set for remote operating interface (HMI)		
CFW500-CCHMIR2M	2-meter cable set for remote operating interface (HMI)		
CFW500-CCHMIR3M	3-meter cable set for remote operating interface (HMI)		
CFW500-CCHMIR5M	5-meter cable set for remote operating interface (HMI)		
CFW500-CCHMIR75M	7.5-meter cable set for remote operating interface (HMI)		
CFW500-CCHMIR10M	10-meter cable set for remote operating interface (HMI)		
Description			
CFW500-KN1A	NEMA1 kit - size A (standard for option N1)		   
CFW500-KN1B	NEMA1 kit - size B (standard for option N1)		
CFW500-KN1C	NEMA1 kit - size C (standard for option N1)		
CFW500-KN1D	NEMA1 kit - size D (standard for option N1)		
CFW500-KN1E	NEMA1 kit - size E (standard for option N1)		
CFW500-KN1F	NEMA1 kit - frame F (standard for option N1)		
CFW500-KN1G	NEMA1 kit - frame G (standard for option N1)		
CFW500-KPCSA	Shielding kit for the power cables - size A (standard for option C2 and C3)		
CFW500-KPCSB	Shielding kit for the power cables - size B (standard for option C2 and C3)		
CFW500-KPCSC	Shielding kit for the power cables - size C (standard for option C2 and C3)		
CFW500-KPCSD	Shielding kit for the power cables - size D (standard for option C2 and C3)		
CFW500-KPCSE	Shielding kit for the power cables - size E (standard for option C2 and C3)		
CFW500-KPCSF	Shielding kit for the power cables - size F (standard for option C3)		
CFW500-KPCSG	Shielding kit for the power cables - size G (standard for option C3)		

Notes: 1) Accessory already included if the CFW500 version with the standard plug-in module is selected. The plug-in modules can also be sold separately as an accessory item or spare part.

2) Due to the different connections, when equipped with the plug-in module with the STO/SS1 safety functions, the inverter will still be able to connect another plug-in module at the user's choice.

Accessories

Configuration of the plug-in modules¹⁾

Plug-in module	Functions																		
	Inputs		Outputs			STO/SS1	USB port	Input for encoder ³⁾	Fieldbus networks								Supply		
	Digital	Analog	Analog	Digital relay	Digital transistor				CANopen DeviceNet	RS232	RS485	Profibus-DP	EtherNet/IP	Modbus-TCP	PROFINET IO	BACnet ⁵⁾	10 V	24 V	
CFW500-IOS	4	1	1	1	1	-	-	-	-	-	1	-	-	-	-	1	1	1	
CFW500-IOD	8	1	1	1	4	-	-	-	-	-	1	-	-	-	-	-	-	1	1
CFW500-IOAD	6	3	2	1	3	-	-	-	-	-	1	-	-	-	-	-	-	1	1
CFW500-IOR-B	5 ²⁾	1	1	4	1	-	-	-	-	-	1	-	-	-	-	-	-	1	1
CFW500-ENC	5 ²⁾	1	1	4	1	-	-	1	-	-	1	-	-	-	-	-	-	1 ⁶⁾	1
CFW500-CUSB	4	1	1	1	1	-	1	-	-	-	1	-	-	-	-	-	-	1	1
CFW500-SFY2 ⁴⁾	-	-	-	-	-	2	-	-	-	-	-	-	-	-	-	-	-	-	-
CFW500-CCAN	2	1	1	1	1	-	-	-	1	-	1	-	-	-	-	-	-	1	-
CFW500-CRS232	2	1	1	1	1	-	-	-	-	1	1	-	-	-	-	-	-	-	1
CFW500-CRS485-B	4	2	1	2	1	-	-	-	-	-	2	-	-	-	-	1	-	1	1
CFW500-CPDP	2	1	1	1	1	-	-	-	-	-	1	1	-	-	-	-	-	-	1
CFW500-CETH-IP	2	1	1	1	1	-	-	-	-	-	1	-	1	-	-	-	-	-	1
CFW500-CEMB-TCP	2	1	1	1	1	-	-	-	-	-	1	-	-	1	-	-	-	-	1
CFW500-CEPN-IO	2	1	1	1	1	-	-	-	-	-	1	-	-	-	1	-	-	-	1
CFW500-CETH2	2	1	-	-	1	-	-	-	-	-	2	-	2	2	-	-	-	-	1

Notes: 1) All plug-in models have at least one RS485 port. The CFW500-CRS485 plug-in module has two RS485 ports.

The CFW500 allows the installation of one plug-in module per unit.

2) The digital input DI5 is always NPN, and it cannot be configured for PNP like the others.

3) Incremental encoder (A/A - B/B).

See the installation guides of the plug-in modules on the website www.weg.net.

4) Due to the different connections, when equipped with the plug-in module with the STO/SS1 safety functions, the inverter will still be able to connect another plug-in module at the user's choice.

5) For products with software version above 3.7x.

6) Power supply of the encoder.

