



PRODUCT DATA SHEET



PART NUMBER – LC1D1810: Aftermarket direct replacement contactors for Telemecanique LC1D1810, TeSys D Series, type LC1D, 3P, 3PH, 32A, 600V, voltage max 10 hp, 1 N/O auxiliary contact, AC magnetic contactor, suitable for use with LC1-D series motor control systems.

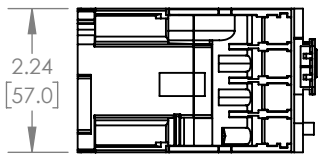
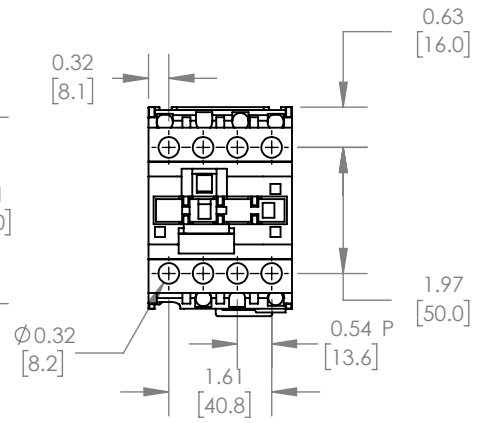
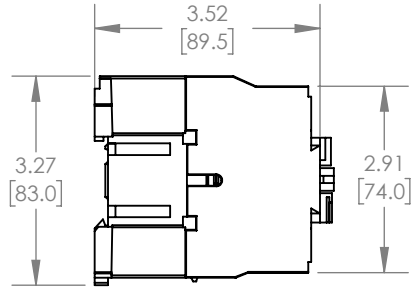
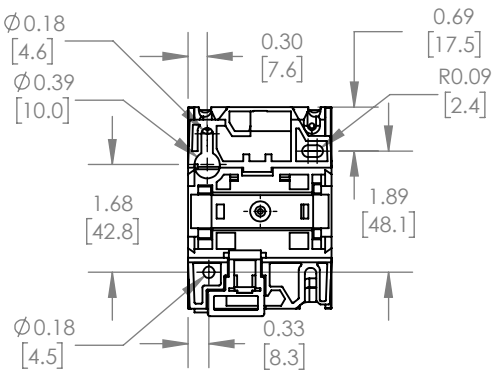
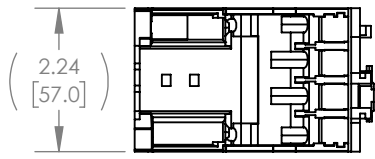
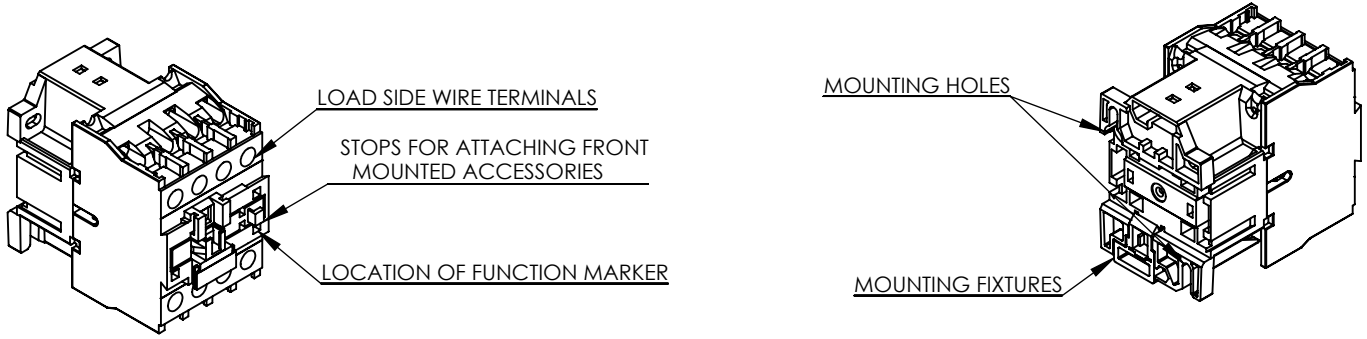
PRODUCT SPECIFICATIONS

Manufacturer	GLORY
Sub-Category	Contactors
Family	TeSys D
Type	LC1D
Phase	3
Poles	3
Voltage	600
Amperage	32
Coil Voltage Max	10 (HP)

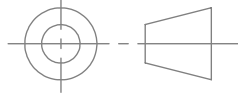
7CBH57HCF G
 J c HU[Y GY VMcb 7\ Ufh
 @7%8% %\$!LL

@7%8% %\$	%%\$#%&\$J 57
6*	&(J 57
6+	&(J 57
9+	(, J 57
; *	%%\$#%&\$J 57
; +	%%\$#%&\$J 57
@9+	&\$, J 57
A *	&&\$J 57
A +	&&\$J 57
D+	&' \$J 57
E *	' , \$J 57
E +	' , \$J 57
F+	((\$J 57
H*	(, \$J 57
I *	&(\$J 57
I +	&(\$J 57
J +	(\$ \$J 57

REVISIONS				
ZONE	DESCRIPTION	REV.	DATE	APPROVED



***NOTE: BRAH ELECTRIC CONTACTOR LC1D1810 IS AN AFTERMARKET DIRECT REPLACEMENT FOR LC1D1810,SERIES.SUITABLE FOR USE WITH LC1-DSERIES MOTOR CONTROL SYSTEMS.**


THIRD ANGLE PROJECTION

PROPRIETARY AND CONFIDENTIAL
THE INFORMATION CONTAINED IN THIS DRAWING IS THE SOLE PROPERTY OF BRAH ELECTRIC. ANY REPRODUCTION IN PART OR AS A WHOLE WITHOUT THE WRITTEN PERMISSION OF BRAH ELECTRIC IS PROHIBITED.

UNLESS OTHERWISE NOTED
ALL DIMENSIONS ARE IN INCHES
METRIC UNITS ARE DISPLAYED
BENEATH IN [MM.]

MATERIAL
MOLDED PLASTIC CASE

FINISH
N/A

DO NOT SCALE DRAWING

MAGNETIC CONTACTOR

SIZE A	DWG. NO. LC1D1810	REV. A
SCALE:1:3	WEIGHT: 3.2 LBS	SHEET 1 OF 1